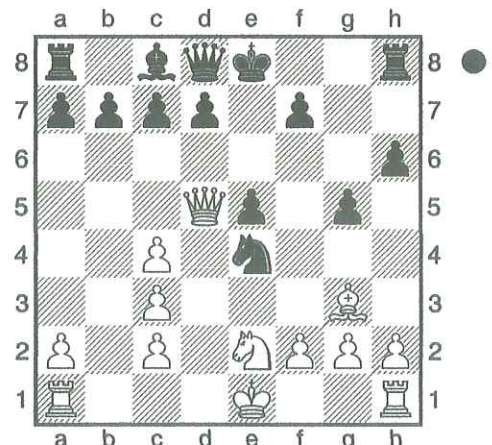
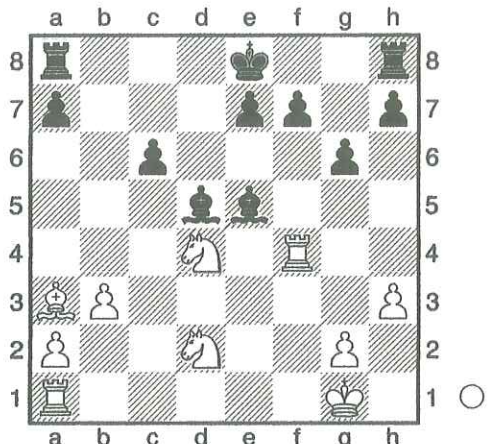




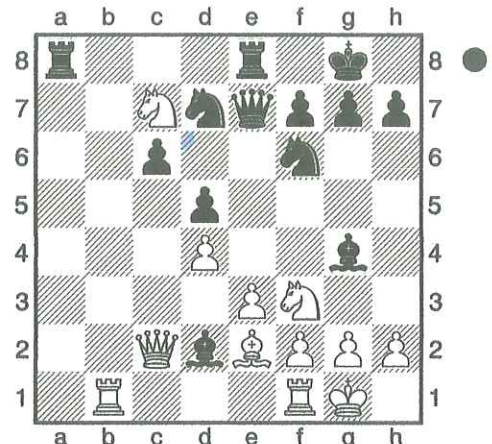
SHOULD BLACK PLAY ...NXYE?



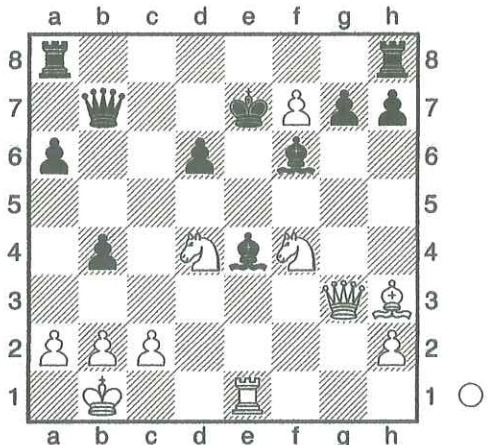
FIND BLACK'S BEST MOVE



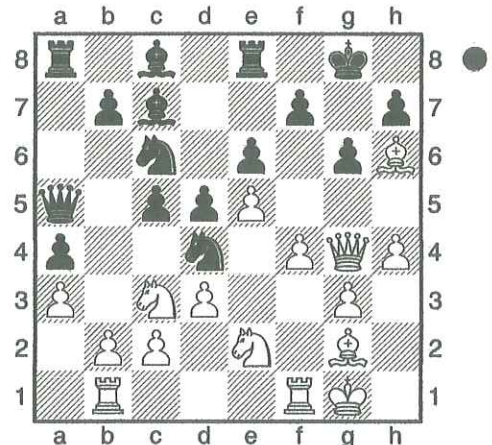
DOES RAFI HOLD IT ALL TOGETHER FOR WHITE?



BLACK HAS A NICE SHOT IN THIS RAZOR SHARP POSITION



MANY MOVES WIN FOR WHITE, BUT CAN YOU SPOT THE CRUSHING BLOW?



ARE WHITE'S ADVANCED PAWNS A STRENGTH, OR A LIABILITY?

SOLUTIONS

Puzzle 1: Yearwood V Achtemichuk

The simple 1...d6 would give black a slightly worse position because of his kingside weaknesses, but black should be able to hold it with correct play. Instead, ...Nxe4 doesn't work due to 2.Qd5! when 2...Bxc3+ 3.bxc3 takes us to the next diagram.

Puzzle 2: Yearwood V Achtemichuk

Again the simple 3...d6 is black's best, as 4.Qxe4 f5 5.Qd3 f4 traps the bishop. Black still has problems to solve after 6.Qg6+ Kd7 7.c5! though.

Puzzle 3: Zeggelaar V Sequillion

Unfortunately, 1.Raf1 loses to 1...Bxf4 2.Rxf4 e5! 0-1

Puzzle 4: Janzen V Gluckie

1...Bxe3! is black's best move, although the resulting position is far from clear. For example, 2.Nxe8 Rxe8 3.Qxc6 Bxd4 4.Nxd4 Bxe2 5.Nxe2 Qxe2

Puzzle 5: Boik V van der Kamp

1.Nf5+! Kd7 2.Nxg7+ Ke7 3.Nf5+ Kd7 4.Nd3! Bxf5 5.Nc5+!! dxc5 6.Bxf5+ with unstoppable threats.

Puzzle 6: Chaisson V Xiao

Jason missed an exchange-winning move: 1...Nf5! Bg5 2.Ne3 -/+